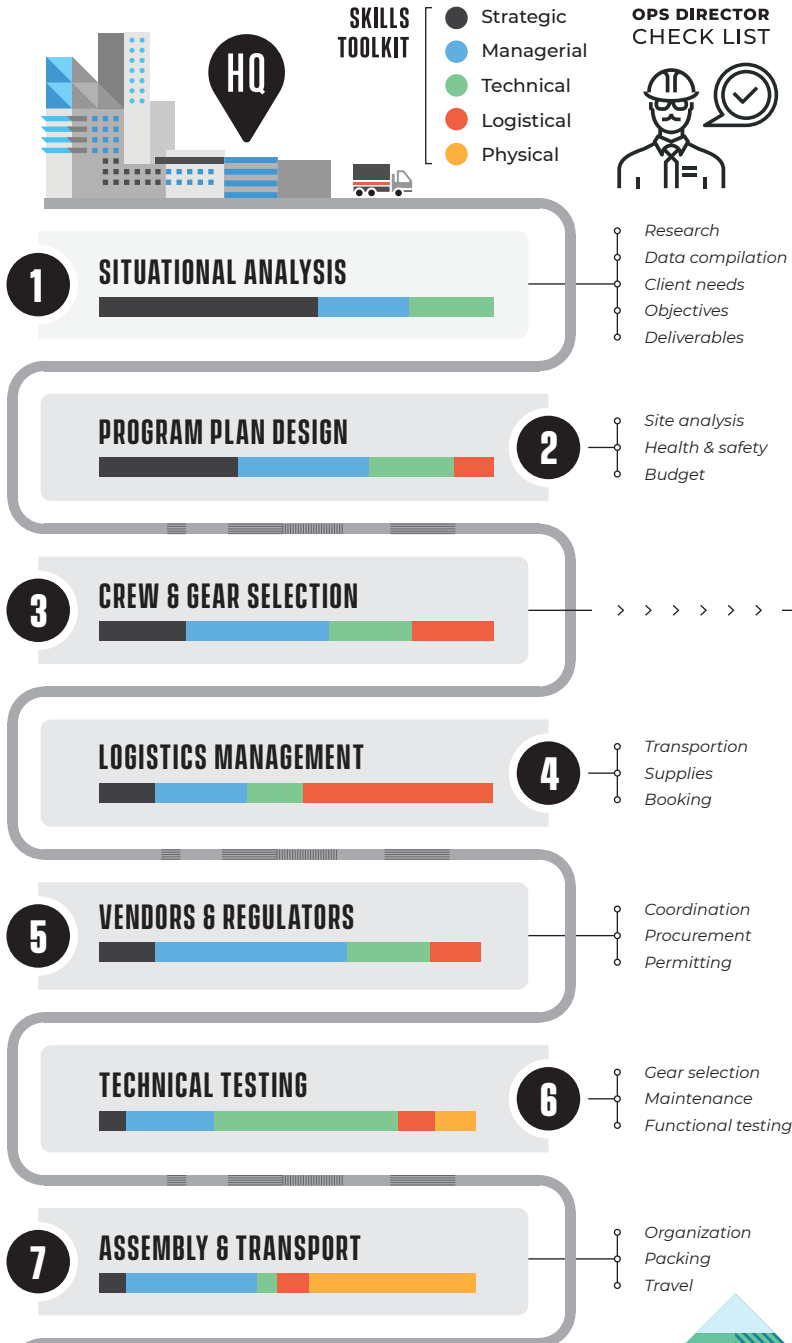


MAESTRO OF MOBILITY

In order to execute a successful and efficient exploration program, the Director of Operations must not only be a technical expert, but also a logistical master. Planning, organizing, and moving 16,000 pounds of personnel, supplies, and highly sensitive equipment over thousands of miles from headquarters to remote wilderness job sites is a thing of beauty when executed to precision.

THE OPERATIONS ORCHESTRATION



HERE WE GO!

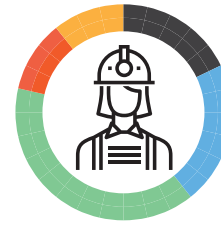
EXPLORE!

TEAM COMPOSITION

ROLES & SKILLS



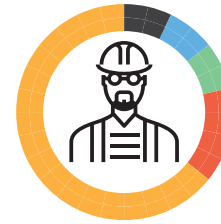
FIELD MANAGER



PROJECT GEOLOGIST



FIELD GEOLOGIST



LABORER

KEY TECHNICAL EQUIPMENT



GEM Systems
Ground Magnetometer
/VLF



ThermoFisher Scientific
Handheld Nitron XRF



Mapping Tablets with
Survey123 & ArcGIS



Garmin Handheld
GPS Units



Brunton Compasses

OUTFITTING A FIELD PROGRAM

What Does 16,000 Pounds Of Gear Look Like?

