

Resource Targeting



Overview

Societies ability to grow is heavily dependent on the supply of natural resources. Targeting new resources is the first step to developing tomorrow's sustainable economy.

Big Rock utilizes a variety of modern tools & strategies for identifying and locating natural resource deposits.

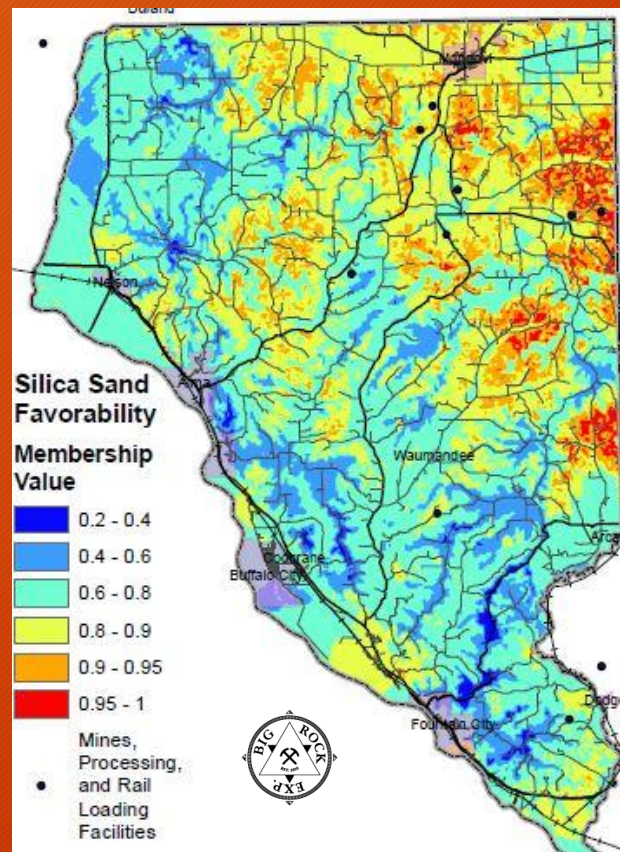




Resource Targeting

Services Utilized

- ⌘ Data Management
- ⌘ Mapping & GIS
- ⌘ Spatial & 3-D Modeling
- ⌘ Vector Analysis
- ⌘ Research
- ⌘ Boots on the ground
- ⌘ Drilling
- ⌘ Sampling
- ⌘ Geophysical surveys



Industries Influenced

- ⌘ Timber & Forestry
- ⌘ Energy
- ⌘ Renewable Energy
- ⌘ Water Resources
- ⌘ Real Estate
- ⌘ Minerals & Mining
- ⌘ Gemstones
- ⌘ Agriculture & Farming
- ⌘ Federal, State & Local Governments

Resource Targeting



Competitive Advantage

- ❏ Diverse commodity experience
- ❏ Proven exploration & targeting strategies
- ❏ Project solutions tailored to each client's needs
- ❏ International project portfolio
- ❏ Experience with Canadian & US regulatory process
- ❏ Internal Research & Development publications
- ❏ Versatile international staff & consultants
- ❏ Advanced GIS & Spatial modeling techniques
- ❏ Full scale project management team

