

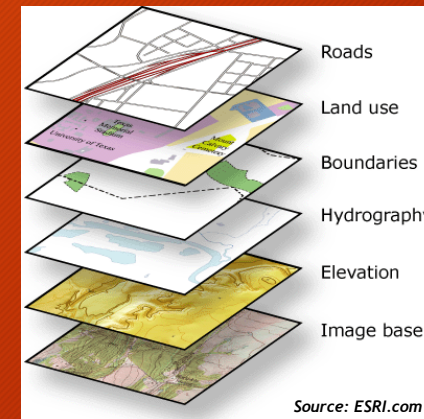
Mapping & GIS Services



Overview

A variety of field & computer based methods are used for mapping natural resources. Mapping is an essential component for targeting deposits, project planning and resource development.

Big Rock utilizes GIS mapping software to visually display & analyze numerous layers of data. This enables large amounts of technical information to be conveyed simply & effectively through a visual medium.



Mapping & GIS Services

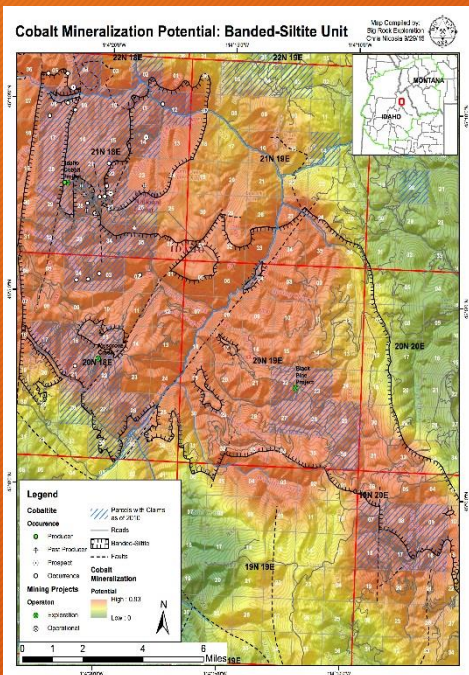


Industries Influenced

- ⚡ Minerals
- ⚡ Agriculture & Timber
- ⚡ Energy Resources
- ⚡ Water Resources
- ⚡ Real Estate
- ⚡ Transportation
- ⚡ Government Agencies
- ⚡ Municipalities
- ⚡ Engineering
- ⚡ Environmental

Services Utilized

- ⚡ Geological mapping
- ⚡ Layered PDF map building
- ⚡ Spatial & thematic mapping
- ⚡ GPS mapping & surveying
- ⚡ Claim boundary locating
- ⚡ Geophysical mapping
- ⚡ Vector analysis
- ⚡ Drill hole & water well locating
- ⚡ Underground mine mapping
- ⚡ Mineral potential mapping



Mapping & GIS Services



Competitive Advantage

- ❖ Visualizing your full resource potential
 - ❖ Minerals, wetlands, agricultural, timber, etc.
- ❖ Customized spatial analytics and modeling techniques
- ❖ Cloud based solutions for secure & simple access
- ❖ International remote project experience
- ❖ Specialty trained field mapping personnel
- ❖ Certified GIS staff